

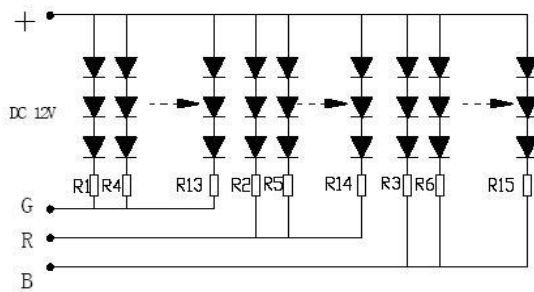
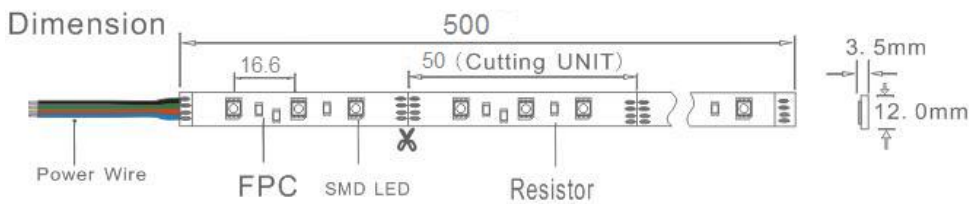
5050 RGB SMD Strip Light

Waterproof series

- ◆ Car decoration
- ◆ Architectural decorative lighting
- ◆ Archway, canopy and bridge edge lighting
- ◆ Auditorium walkway lighting
- ◆ Backligh for signage letters
- ◆ Channel letter lighting



- ◆ Characteristic: 3in1 high intensity light strip
- ◆ Linear separ LED strip on flexible PCB with self-adhesive back 3LEDs a group
- ◆ Various angle 120degrees
- ◆ Made of leaded LEDs with lighting emitting in the direction of PCB
- ◆ Available colors: Red Green Blue Yellow White warmwhite
- ◆ Work voltage: DC12V & 24V
- ◆ Anti-uv Design



Notes:

- ◆ All dimension units are millimeters
- ◆ All dimension tolerance is ± 1 mm unless otherwise noted
- ◆ **Electrical parameters as the standard 1M**

Absolute Maximum Rating at TA=25°C

Parameter	Symbol	Absolute Maximum Rating	Unit
Forward Current	IF	600	mA
Power Dissipation	PD	7.2	W
Electrostatic discharge	ESD	2000	V
Operating Temperature	Topr	-25+∞60	V
Storage Temperature	Tstg	-40+∞80	V

Electrical / Optical Characteristics at T

Parameter	Symbol	Color	Condition	Unit

Forward Voltage DC	VF	RGB	IF=600mA	12	V
Dominant Wavelength	λ D	R	IF=200mA	620-630	nm
		G	IF=200mA	510-520	
		B	IF=200mA	460-470	
Luminous flux	ϕ V	R	IF=200mA	90-100	lm
		G	IF=200mA	130-140	
		B	IF=200mA	50-65	
Recommend Forward Current	IF(rec)	~	560-600	mA	

Basic Technical Data

Part Number	Color	LED	Luminous (lm)	Viewing Angle	Current (mA)	Packing Means
		Quantity		2 θ 1/2		
SU-200804	Red	30	90-100	120°	560-600	5m/reel
	Green		130-140			5m/reel
	Bule		50-65			5m/reel