

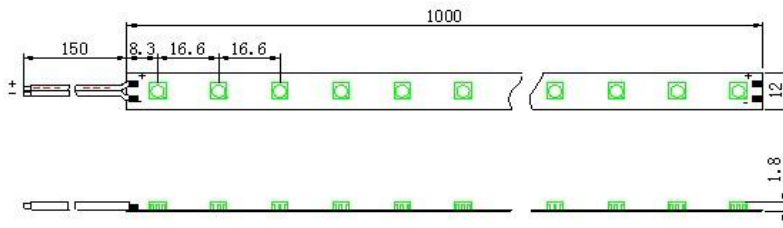
5050SMD Strip Light

Waterproof series

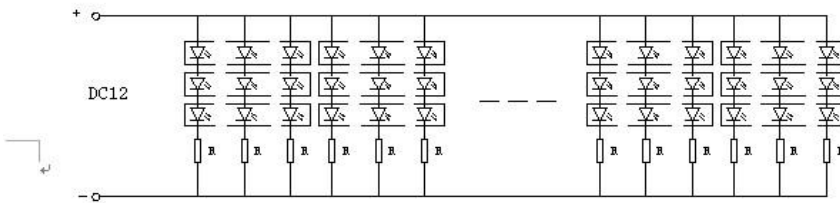
- ◆ Car decoration
- ◆ Architectural decorative lighting
- ◆ Archway, canopy and bridge edge lighting
- ◆ Auditorium walkway lighting
- ◆ Backligh for signage letters
- ◆ Channel letter lighting



- ◆ Characteristic: 3in1 high intensity light strip
- ◆ Linear separ LED strip on flexible PCB with self-adhesive back 3LEDs a group
- ◆ Various angle 120degrees
- ◆ Made of leaded LEDs with lighting emitting in the direction of PCB
- ◆ Available colors: Red Green Blue Yellow White warmwhite
- ◆ Work voltage: DC12V & 24V
- ◆ Anti-uv Design



Units: Millimeters



Notes:

- ◆ All dimension units are millimeters
- ◆ All dimension tolerance is $\pm 1\text{mm}$ unless otherwise noted
- ◆ Electrical parameters as the standard 1 M

Absolute Maximum Rating at $T_A=25^\circ\text{C}$

Parameter	Symbol	Absolute Maximum Rating	Unit
Forward Current	IF	600	mA
Power Dissipation	PD	7.2	W
Electrostatic discharge	ESD	2000	V
Operating Temperature	Topr	$-25 \sim 60$	V
Storage Temperature	Tstg	$-40 \sim 80$	V

Electrical / Optical Characteristics at T

Parameter	Symbol	Color	Condition	Unit
Forward Voltage DC	VF	RGB	IF=600mA	12 V
Dominant Wavelength	λ_D	R	IF=200mA	620-630
		G	IF=200mA	510-520

		B	IF=200mA	460-470	
Luminous flux	φV	R	IF=200mA	90-100	lm
		G	IF=200mA	130-140	
		B	IF=200mA	50-65	
Recommend Forward Current	IF(rec)		~	560-600	mA

Basic Technical Data

Part Number	Color	LED	Luminous(lm)	Viewing Angle	Current (mA)	Packing Means
		Quantity		2θ1/2		
SU200910-W	White	60	600-720	120°	180-200	5m/reel
SU200910-R	Red	60	400-480	120°	170-180	5m/reel
SU200910-G	Green	60	440-520	120°	180-200	5m/reel
SU200910-B	Bule	60	300-280	120°	180-200	5m/reel
SU200910-Y	Yellow	60	400-480	120°	180-200	5m/reel